

MAGNETIC WALLPAPER

Groovy Magnets



The magnet friendly wallpaper is pretty heavy: the job is a lot easier with some help.
Your friend can hold the wallpaper while you apply it along the perpendicular.

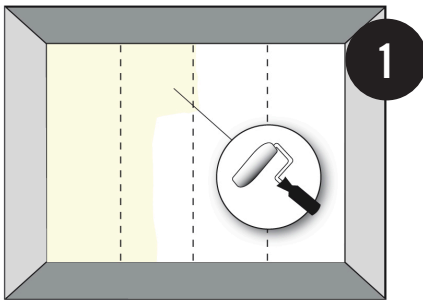
Use ready mixed vinyl wallpaper glue. Self-mix or very liquid adhesives should be avoided.
Apply a thin layer of wallpaper glue evenly with a roller.
The wallpaper is washable using a damp cloth.

PREPARE

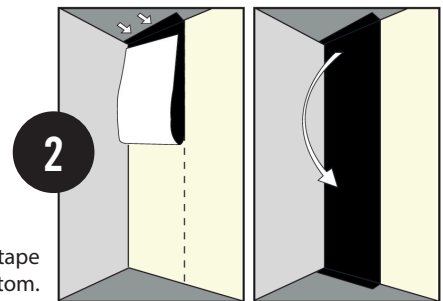
Make sure the surface is smooth, clean and dry.
Prepare the walls before applying. Remove all old wallpaper layers.
Repair cracks and holes.
Lightly sanding of non-absorbent surfaces is recommended.
Make the surface dust free and degrease with a degreaser and water.
Pre-work: Apply a thin layer of wallpaper glue evenly with a roller. Let it soak into the wall.

APPLY

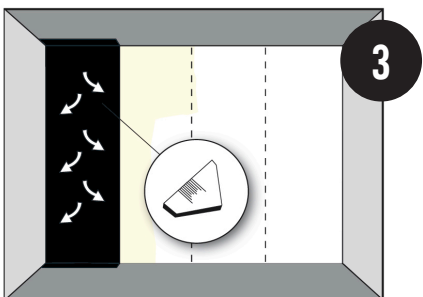
Follow these steps:



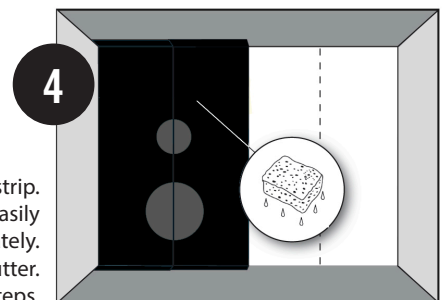
1 Draw a perpendicular line from top to bottom on the surface where the wallpaper will be applied. Use a level or plumb bob. Apply the glue directly and evenly in a thin layer to the wall.



Paste the wallpaper along the perpendicular. If possible fix the upper part with a strong tape so that it doesn't move. Apply it further to the wall from top to bottom.



3 Sweep firmly from the middle outwards. Remove bubbles or excess glue with a window wiper or soft cloth.



Apply the successive wallpaper strips sliding one strip in place against the previous strip.
The wallpaper is washable. Excessive glue can easily be removed with a sponge and lukewarm water. Do this immediately.
Cut excessive wallpaper at top and bottom with a ruler and a cutter.
For each subsequent strip repeat previous steps.

Use our 'Groovy Magnets': they have the best possible adhesion to hang your photos, notes and little art works on our magnet wallpaper.

www.groovymagnets.com

You can download this manual on our website in dutch, french, and german